



## 4E1-4\*10/100BaseT Ethernet converter

**Model: AZ-SEOP-4E1**



### Functions:

4E1-4\*10/100BT serial interface converter used back multiplexing technology, transfer 10M/100M Ethernet data by using multi E1 channels. Realize convert between 1 to 4 E1 channels and Ethernet interface. It can transmit signal of E1 channel to RJ45 interface point to point, realize the connection of E1 channel and Ethernet. It different from normal bridge , supporting 1 to 4 E1 channels customized configuration, auto detecting the number of E1 channels and use the available E1, allow some limiting transfer delay between different E1 channels. It can connect with Ethernet switch or hub when in 10/100Mbps full/half duplex mode, make use of mass E1 resource in telecommunication networks to expend the transfer distance and application field of Ethernet, is a suitable solution for broadband switch in of Ethernet. It can used in fields such as connecting LANs, connecting end offices, VOD, remote monitor, E1 interface of switches, etc.

### Features:

- ✧ Realize transparent transfer 4\*Ethernet over 4E1 TDM.
- ✧ 4\*10M/100M Ethernet, full/half duplex auto-negotiation
- ✧ 4 Ethernet support VLAN function based on tags compliant to IEE 802.1Q.
- ✧ Four shared there port can save an Ethernet switch for customer.
- ✧ Ethernet support AUTO-MDIX( cross over and straight through self-adapt)
- ✧ Allow 4E1 channels up to 220ms transfer delay. When the delay over the limitation, can stop transfer automatically.
- ✧ Having 2 loop back functions: E1 local loop, E1 external loop.
- ✧ Support Dynamic Ethernet MAC address (4096), having local address filter function.
- ✧ E1 interface compatible with ITU-T G.703, G.704, and G.823. Signaling slot not supported.
- ✧ E1 interface having internal clock resume circuit and HDB3 codec circuit.
- ✧ Support E1 channel hot plug, and auto detect available E1 channels not pause the transmission.
- ✧ Supporting 1 to 4 E1 channels customized configuration, auto detect the number of E1 channels and select the available E1 at reset.
- ✧ E1 Support 75Ω(unbalance) impedance or 120Ω(balance) for order
- ✧ Support reset remote system from local system.
- ✧ Support Ethernet monitor auto reset function.
- ✧ Support SNMP, CLI, and GUI management (optional).
- ✧ 19 inch rack mount,1U high
- ✧ support AC 220V power or DC 48V power or double AC+DC power



**E1 Interface:**

- Line Rate: 2.048Mbps±50ppm
- Line Code : HDB3
- Interface Standard: ITU-T G.703
- E1 Impedance: 75Ω(unbalance) or 120Ω(balance)
- Connections : dual coax BNC and 120-ohm twisted-pair (RJ45)
- Jitter tolerance : finer than G.742 and G.823

**10/100Base-T Interface**

Rate: 10/100M, full/duplex auto-negotiation  
 Protocol: Support IEEE 802.3, IEEE 802.1Q (VLAN)  
 MAC Address Entries: 4096 Entries  
 Physical interface: RJ45, support AUTO-MDIX

**Power supply:**

Working voltage range wide, good anti-disturb and Isolation, work stable  
 Option I – DC-48V, range DC-36V~DC-72C  
 Option II – AC220V, range AC100V~AC240V  
 Power Consumption: <=10 Watts

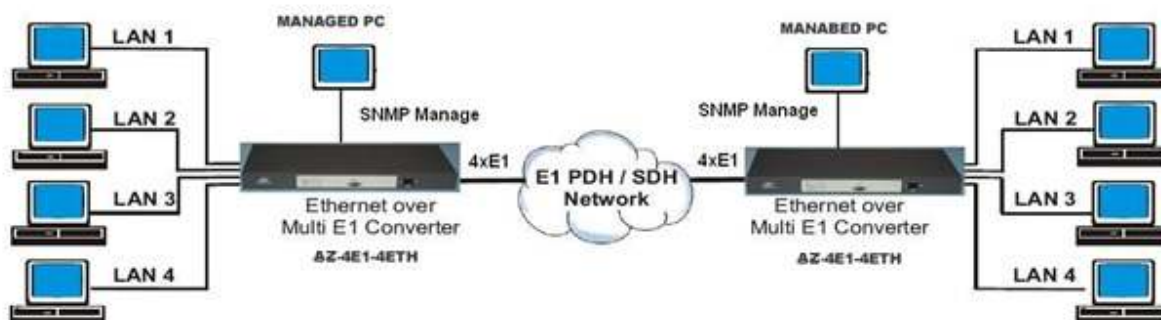
**Environment condition:**

Operating temperature: 0C~+50 C  
 Storage temperature: -20 C~+70 C  
 Relative temperature: 95% (uncondensed)

**Dimension:**

- 19" rack mount
- ✧ 433mm(L)
- ✧ 138mm(W)
- ✧ 44mm(H)

**Application:**



**Order information:**

AZ-SEOP-4E1/AC	4E1 to 4ethernet converter,4E1,75ohm and 120ohm,4*10/100M Ethernet port,AC220V
AZ-SEOP-4E1/DC	4E1 to 4ethernet converter,4E1,75ohm and 120ohm,4*10/100M Ethernet port, DC48V
AZ-SEOP-4E1/AC+DC	4E1 to 4ethernet converter,4E1,75ohm and 120ohm,4*10/100M Ethernet port, Double power AC220V and DC48V